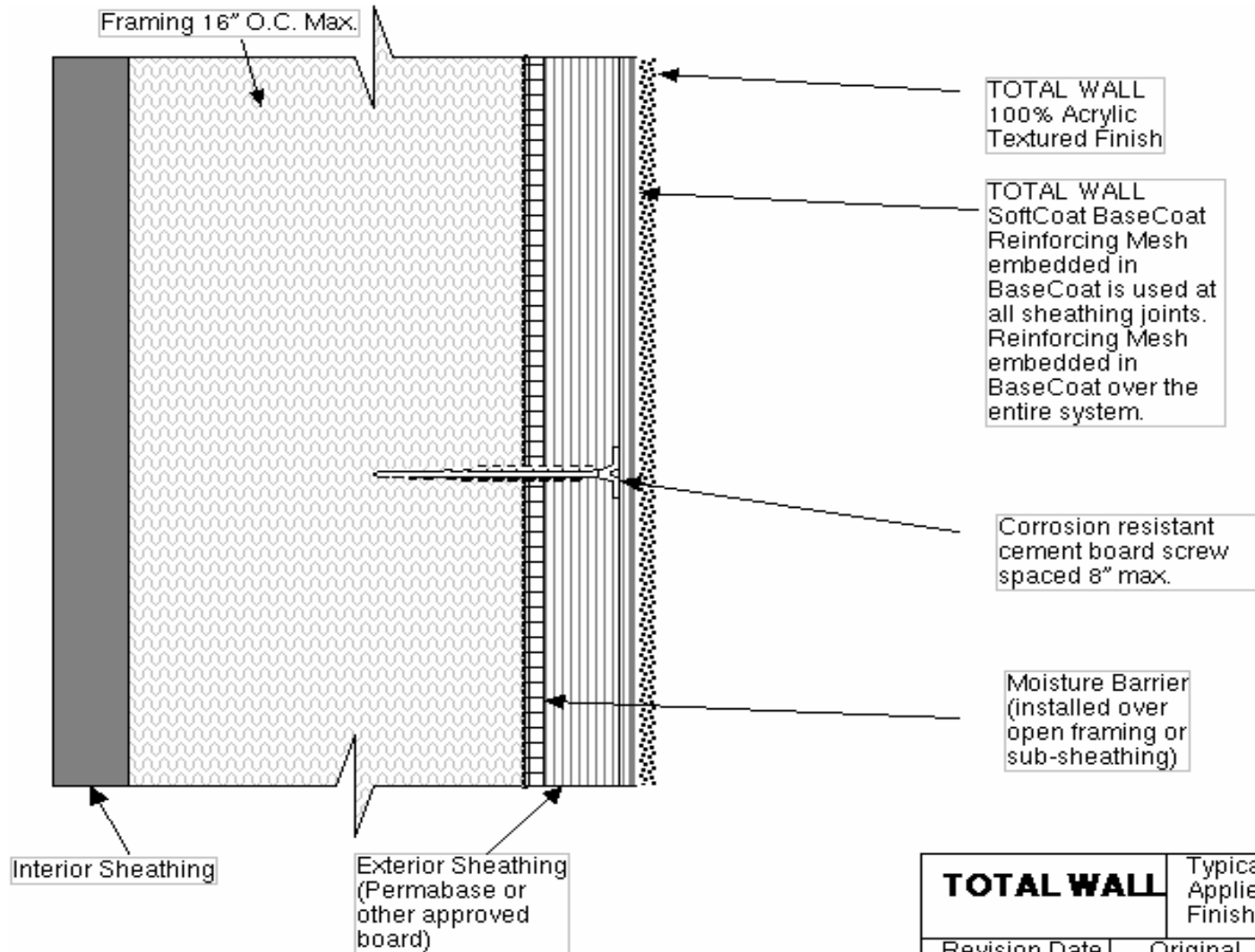
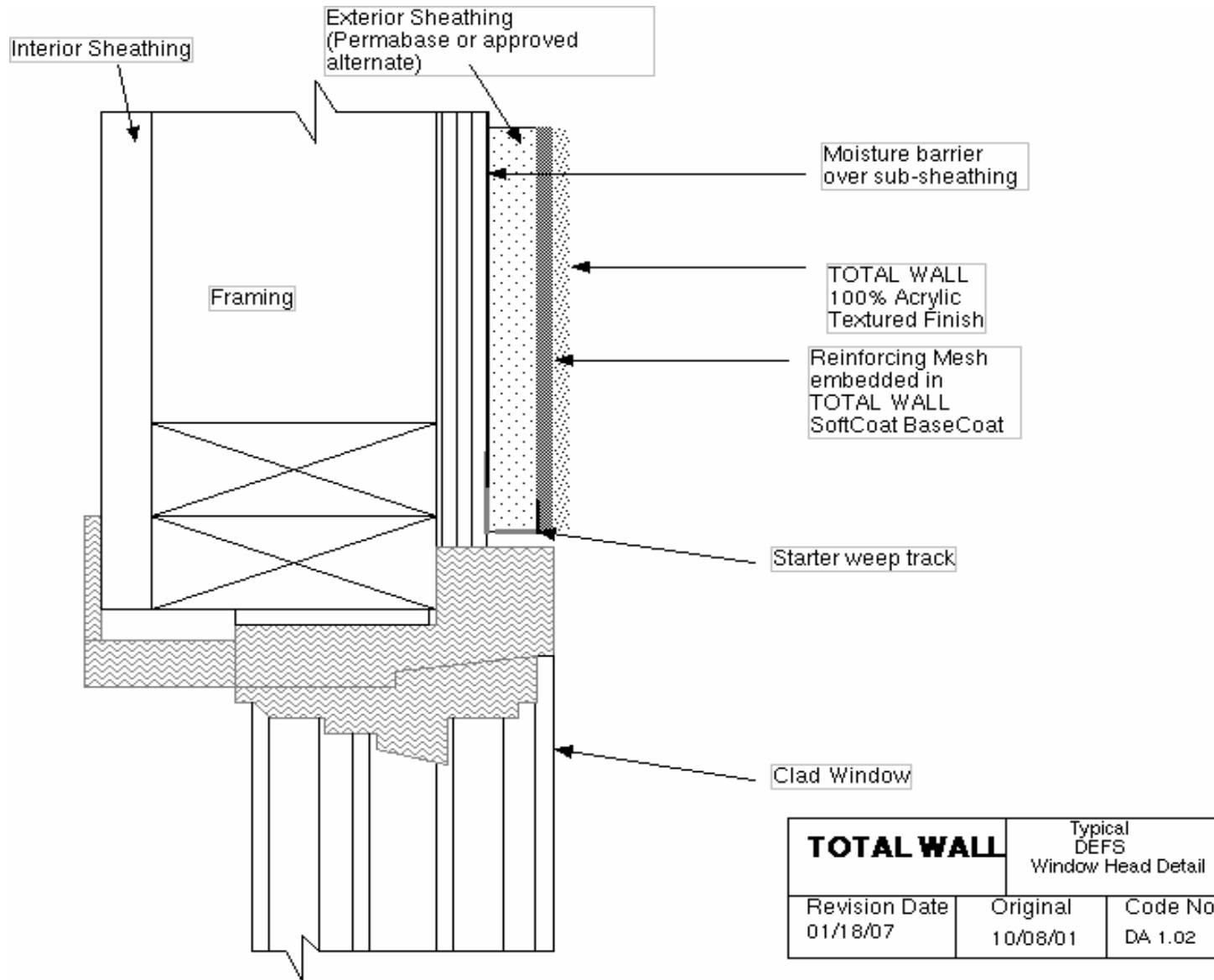
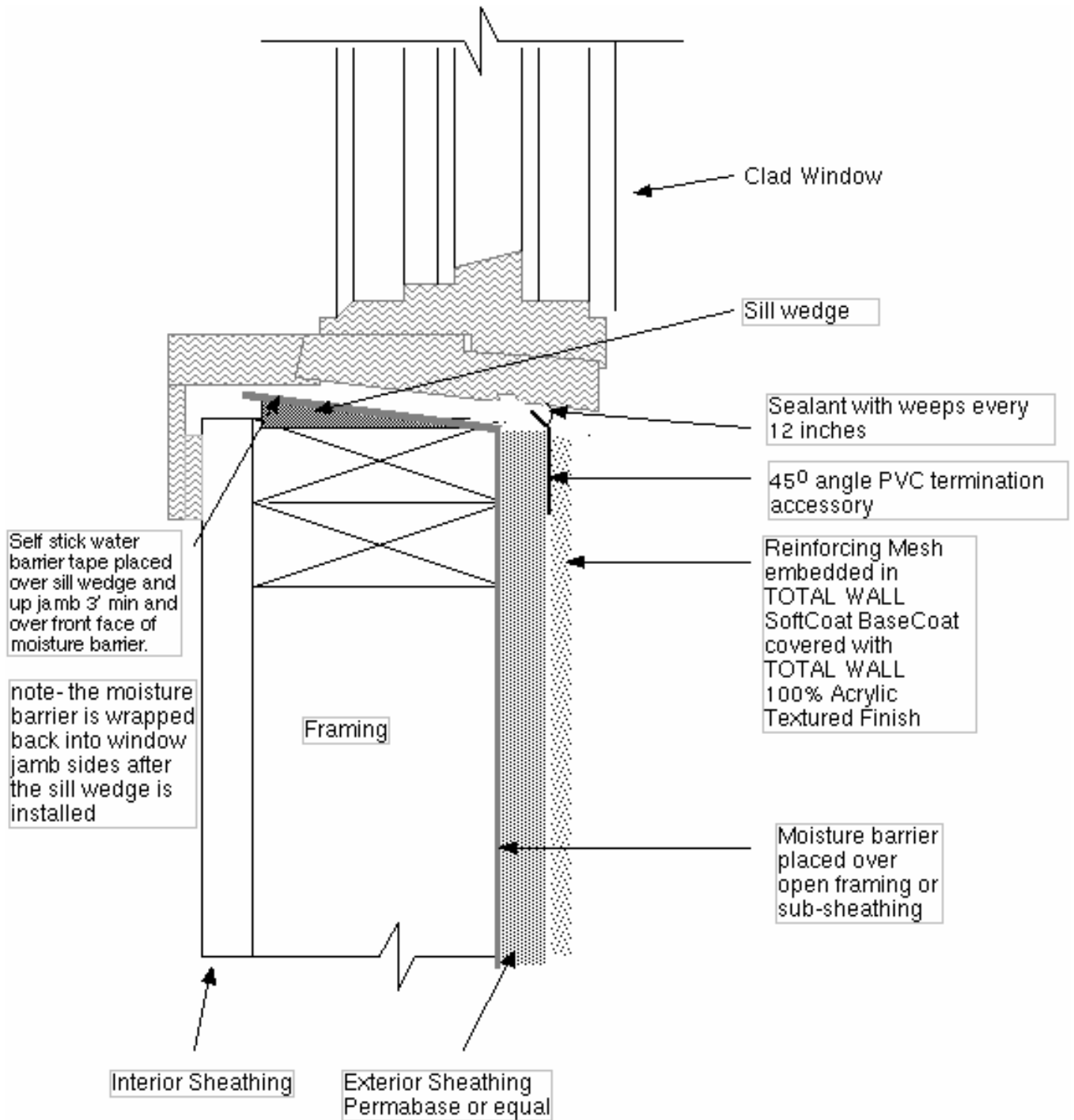


TOTAL WALL		Direct Applied Exterior Finish System Isometric
Revision Date	Original	Code No.
01/118/07	10/10/01	DA 1.00

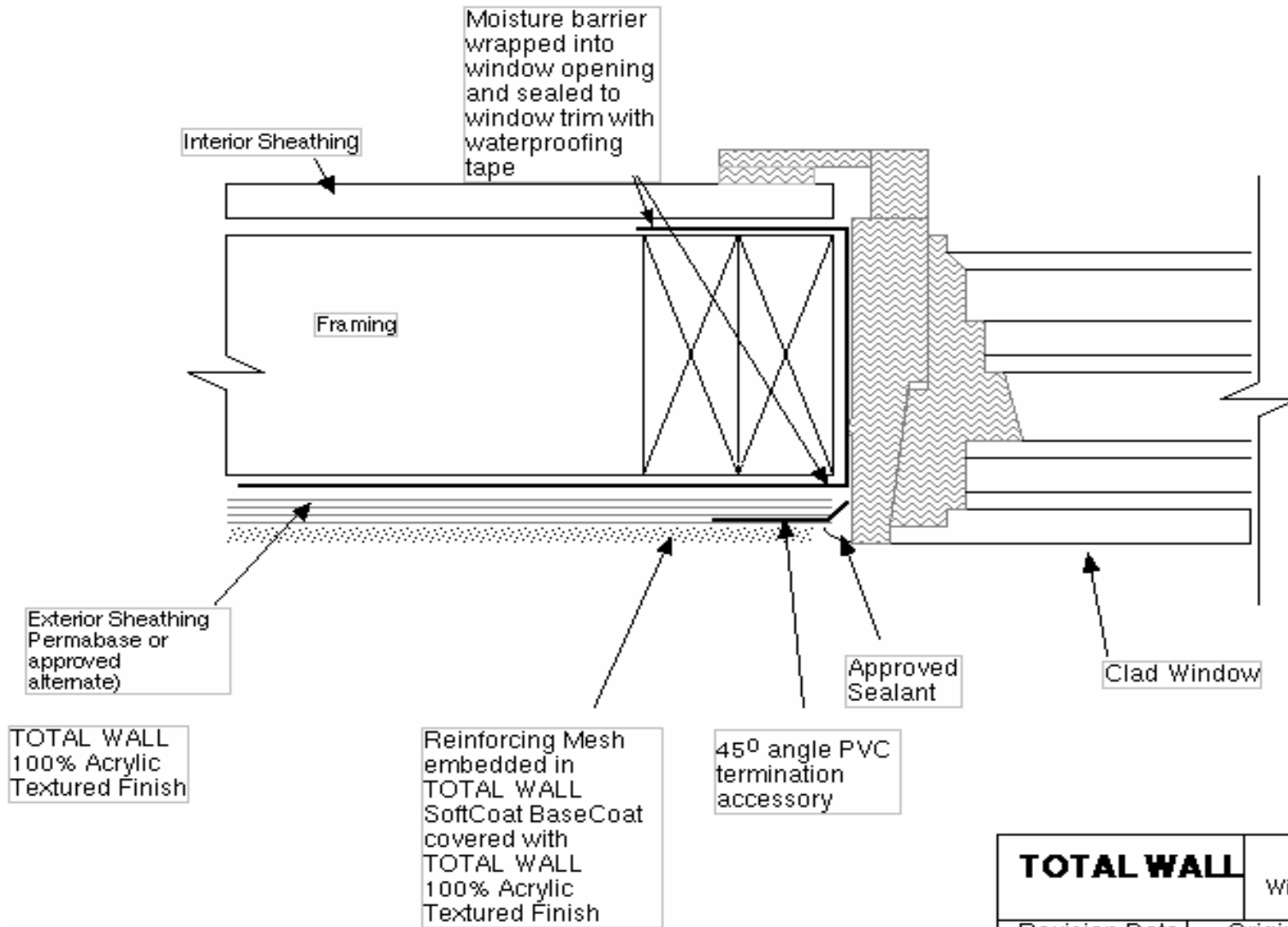


TOTAL WALL		Typical Direct Applied Exterior Finish System
Revision Date	Original	Code No.
01/18/07	10/10/01	DA 1.01





TOTAL WALL		Typical DEFS Window Sill Detail	
Revision Date	Original	Code No.	
01/18/07	10/08/01	DA 1.03	



TOTAL WALL		Typical DEFS Window Jamb Detail
Revision Date 01/18/07	Original 10/08/01	Code No. DA 1.04

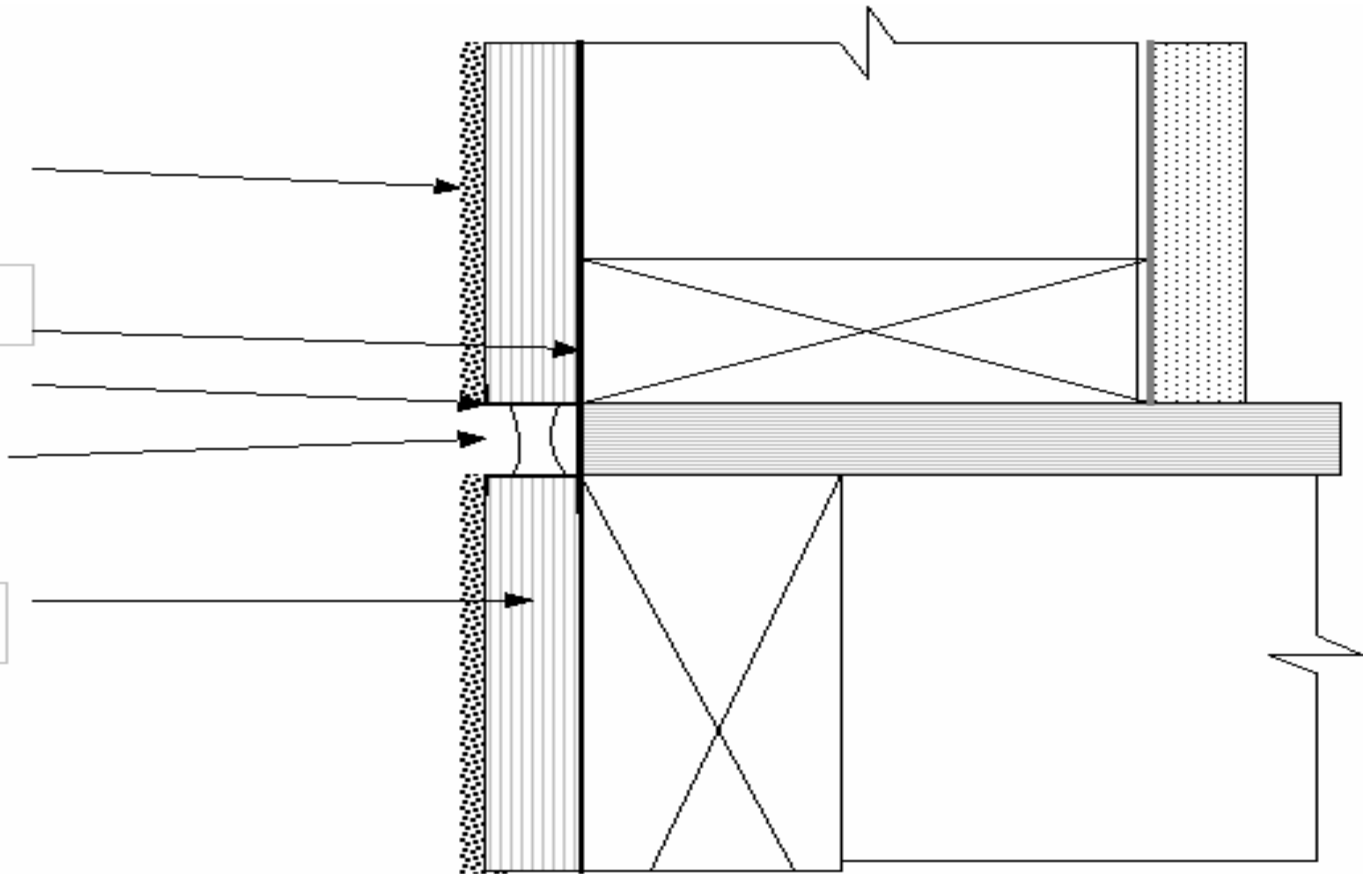
Reinforcing Mesh
embedded in
TOTAL WALL
SoftCoat BaseCoat
covered with
TOTAL WALL
100% Acrylic
Textured Finish

moisture barrier
over open framing or
sub-sheathing

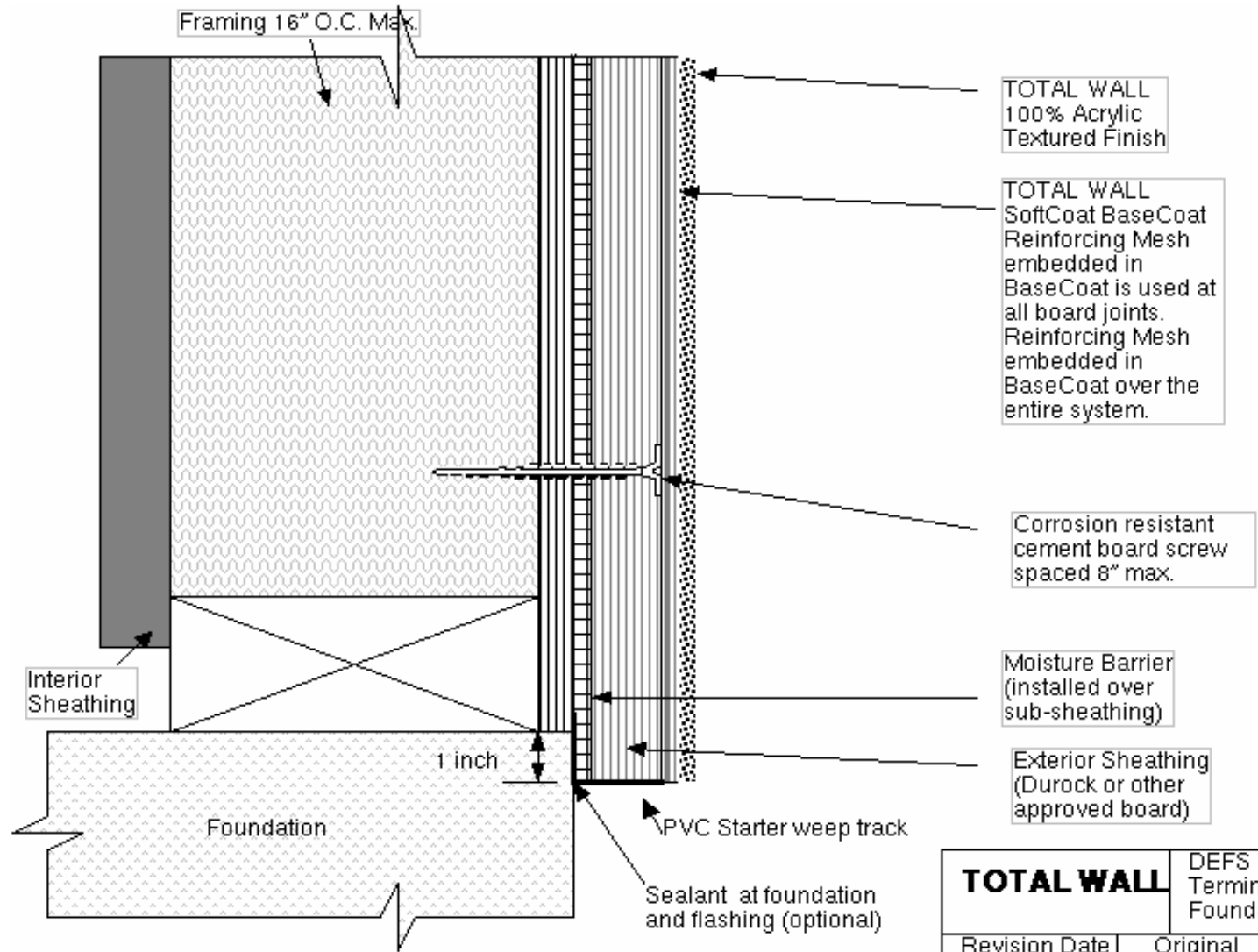
PVC casing bead
on both ends of joint

Approved Sealant
and backer rod or
bond-breaker tape

Exterior Sheathing
(Durock or approved
alternate)



TOTAL WALL		Typical DEFS Floor line Expansion Joint Detail
Revision Date 01/18/07	Original 10/08/01	Code No. DA 1.05



TOTAL WALL
100% Acrylic
Textured Finish

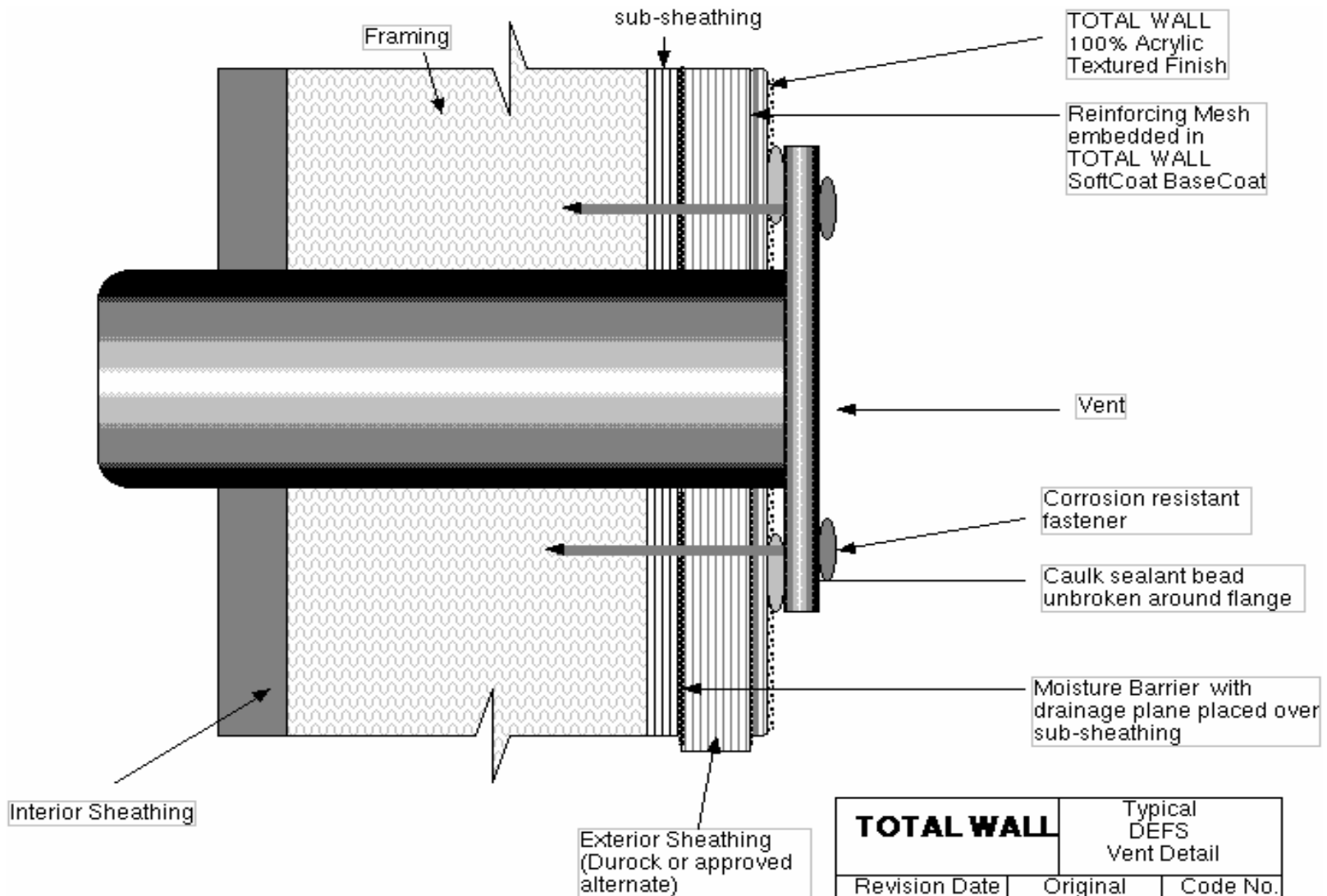
TOTAL WALL
SoftCoat BaseCoat
Reinforcing Mesh
embedded in
BaseCoat is used at
all board joints.
Reinforcing Mesh
embedded in
BaseCoat over the
entire system.

Corrosion resistant
cement board screw
spaced 8" max.

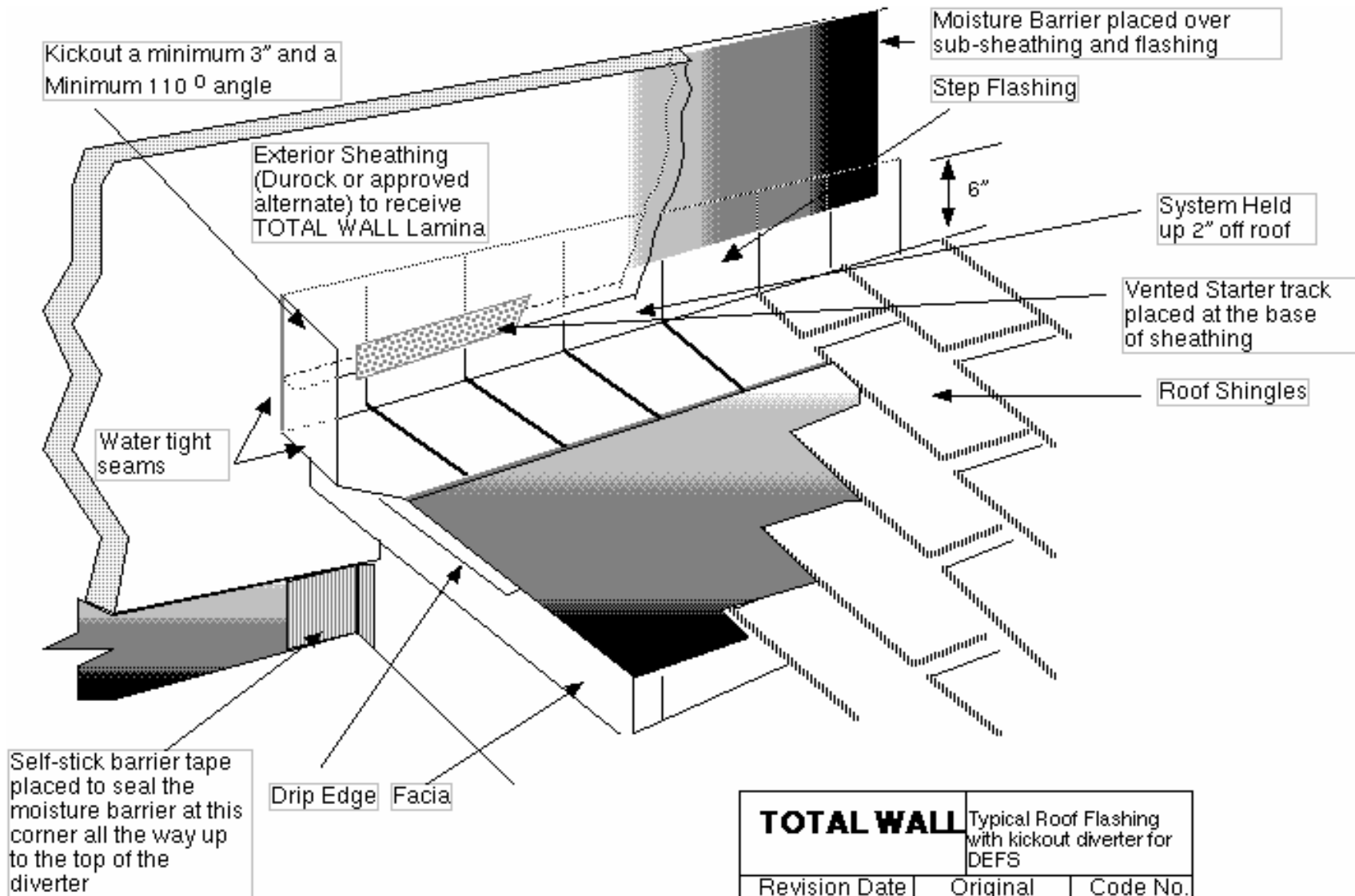
Moisture Barrier
(installed over
sub-sheathing)

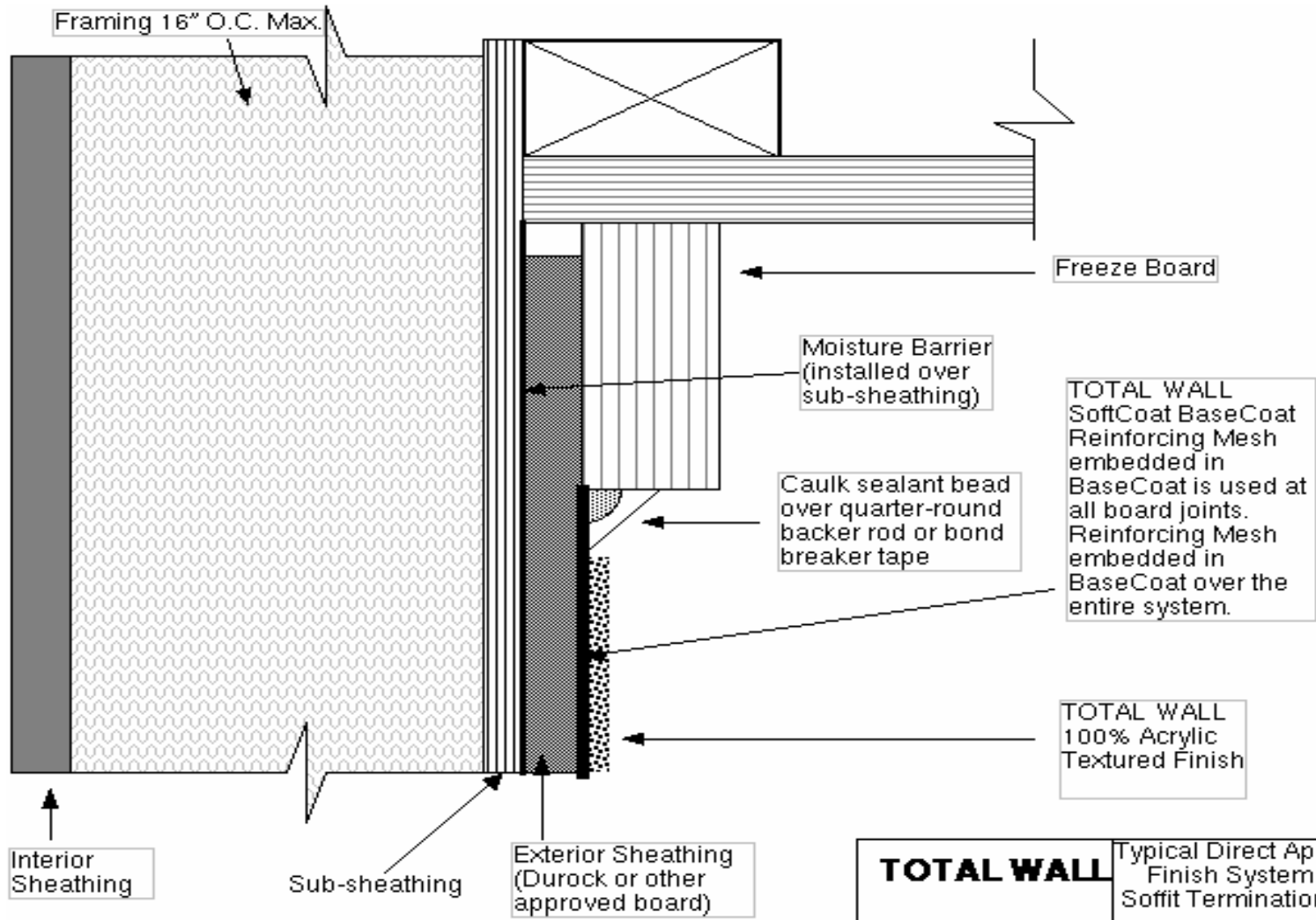
Exterior Sheathing
(Durock or other
approved board)

TOTAL WALL		DEFS Termination at Foundation
Revision Date	Original	Code No.
01/18/07	10/08/01	DA 1.11



TOTAL WALL		Typical DEFS Vent Detail	
Revision Date	Original	Code No.	
01/18/07	10/08/01	DA 2.00	





TOTAL WALL
SoftCoat BaseCoat
Reinforcing Mesh
embedded in
BaseCoat is used at
all board joints.
Reinforcing Mesh
embedded in
BaseCoat over the
entire system.

TOTAL WALL
100% Acrylic
Textured Finish

TOTAL WALL		Typical Direct Applied Finish System Soffit Termination
Revision Date	Original	Code No.
01/18/07	10/08/01	DA 4.00